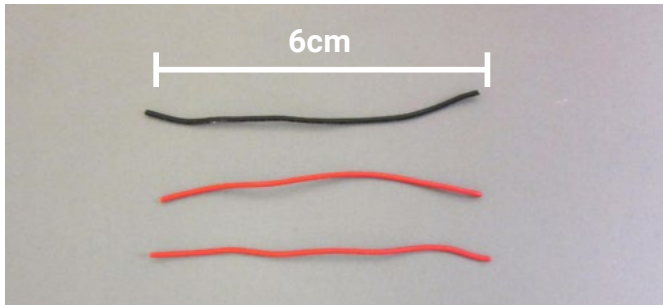
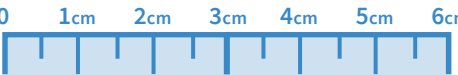
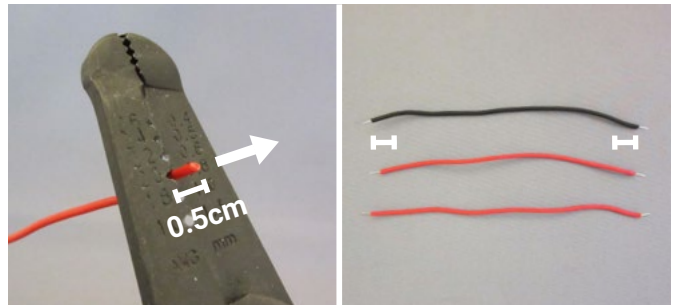


# Dice Spinner

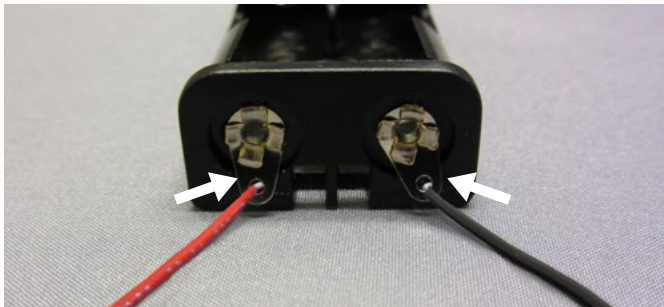
## ASSEMBLY MANUAL



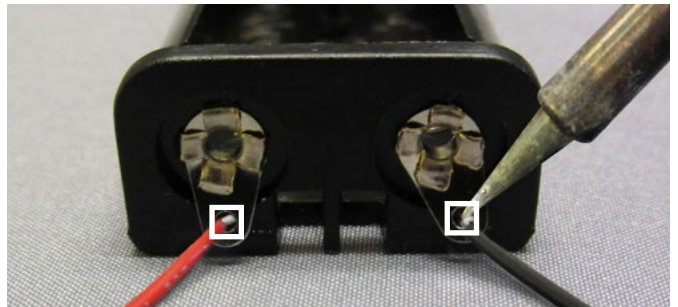
**01.** 



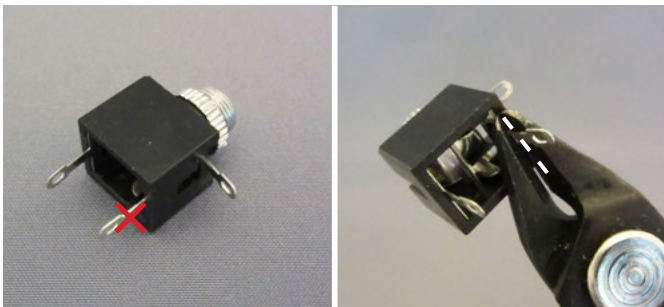
**02.** Use the wire stripper.



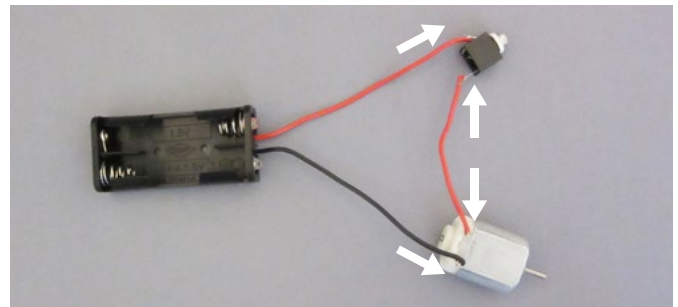
**03.**



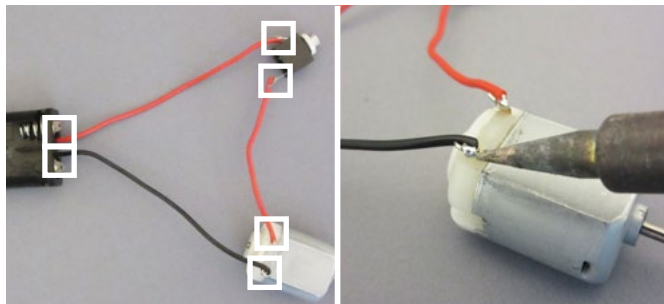
**04.** Solder the 2 cables highlighted in the white boxes.



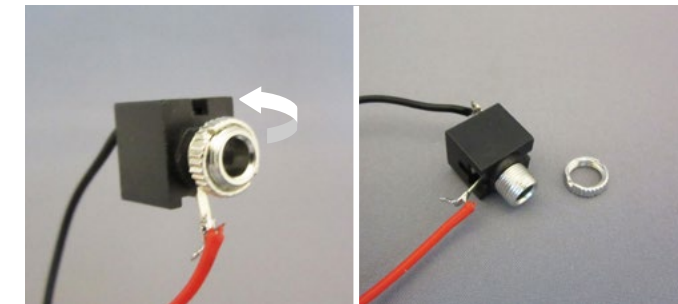
**05.** Cut off the lead marked with the red X.



**06.**



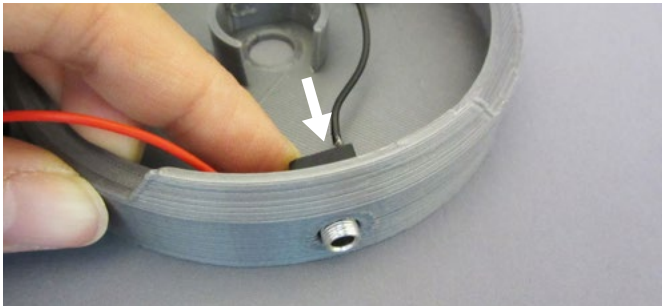
**07.** Solder the 6 connections highlighted in the white boxes.



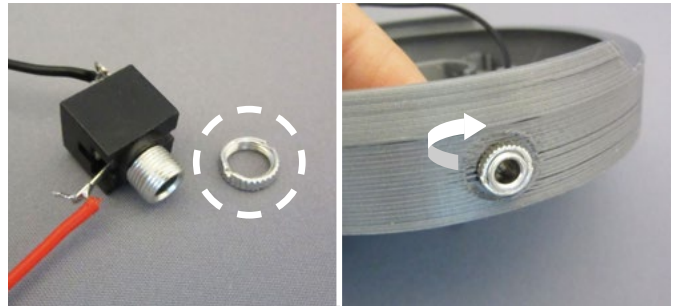
**08.**

# Dice Spinner

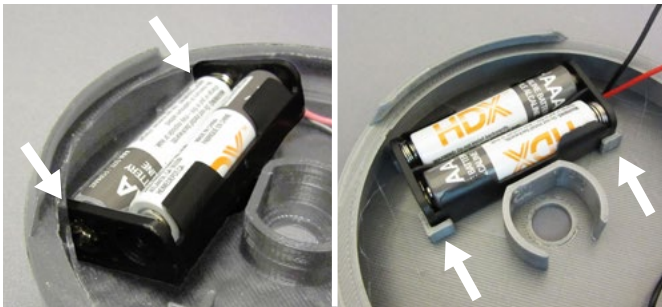
## ASSEMBLY MANUAL



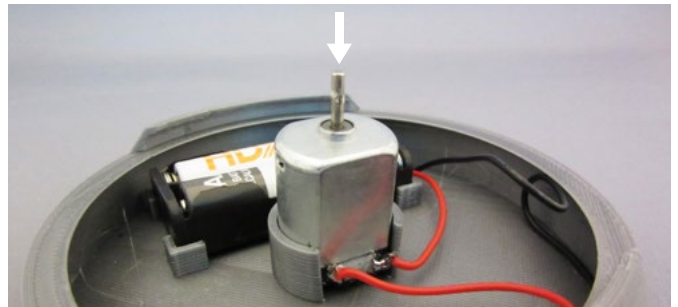
**09.**



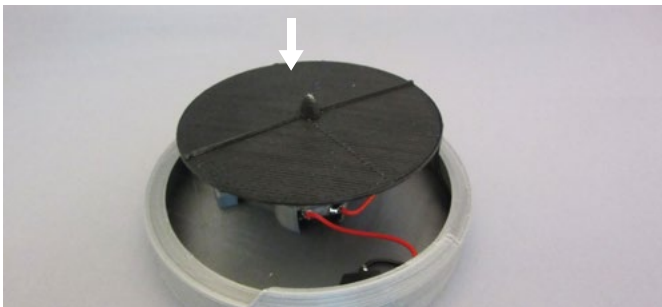
**10.**



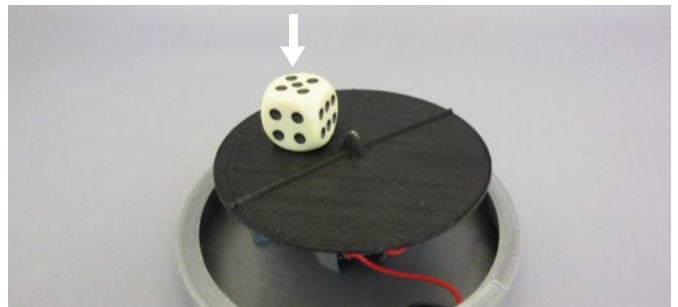
**11.** Insert the battery case into two corners along the edge first and then press into place.



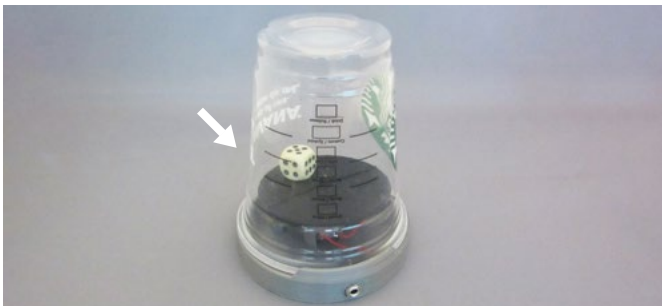
**12.**



**13.**



**14.**



**15.**



**16.** Test the dice spinner with a switch.